

Safety Declaration

Safety and accident prevention must be a part of all trade partners (i.e. subcontractors) bid preparation when choosing to work with Abbott Construction. Each company will have a senior leader sign this declaration as part of the annual pre-qualification process to reiterate their commitment to safety. When proposals are presented, it is understood that the submitting company will meet government and Abbott standards for safety and accident prevention on all Abbott projects, including all safety processes outlined in this declaration. In the event where the Abbott standard and State/Federal requirements are different, the most stringent standard will apply. This is a list of General Minimum Requirements; for an exhaustive safety plan, please refer to Abbott’s Accident Prevention Program.



Subcontractor Pre-construction

Prior to mobilization, each subcontractor’s project management and front-line supervision will attend a pre-construction meeting. Subcontractor field supervision will discuss detailed project specific safety hazards and describe how they and their sub-tier subcontractors intend to implement and conform to Abbott’s Accident Prevention Program (APP).

Daily All Hands Production/Safety Huddle

All subcontractors will participate in a daily All Hands Huddle, where the Abbott Construction Project Team will lead a safety message, warm up/stretching, prime sub activities review, and critical pre-task plan activities discussion.

Subcontractor Supervision and Audit Requirements

Each subcontractor’s onsite supervisor shall have OSHA 30 Hour training. A full-time safety professional is required onsite when subcontractors and their tiers reach 50 employees. Subcontractor supervisors will be required to complete a documented weekly safety audit in CMiC Field mobile app. This audit will list corrective actions taken for hazardous or non-compliant issues found.

Crew Daily Pre-Task Planning

The pre-task plan meeting should be an open discussion between foreman and the craft workers, completed where possible in the work area. Subcontractor trade front-line supervisors will analyze tasks to be performed by their crews and identify the work sequences, hazards, training, controls and emergency action plans necessary to protect workers. Tasks should be clearly communicated and discussed, including high hazard tasks and mitigation methods beyond PPE, ensuring that craft workers understand the hazards and expectations. A documented pre-task safety plan will be completed and submitted daily by each crew working on an Abbott project. All pre-task plans are to be uploaded into CMiC field daily.

Maximum Lifting Weight for Workers

There is a 75-lb maximum lifting weight for any individual worker on site.

Weekly Subcontractor Coordination Meeting

Each subcontractor supervisor will be required to attend a weekly coordination meeting where safety concerns, suggestions, and planning will take place.



Disciplinary Action

A major offense resulting in serious or costly consequences, or repeated minor offenses for which a group or individual shows a lack of responsible effort to correct, may result in suspension or removal. Discipline is intended to preserve good working conditions for all employees and encourage each employee to be responsible and conscientious.

Incident Reporting

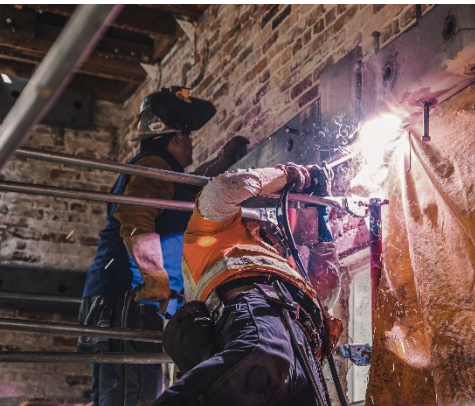
All incidents on the project will be reported immediately to the Abbott project team, regardless of severity. Post-accident drug testing may be required for anyone involved in an incident. This determination will be made by the Abbott project team on a case-by-case basis.

Personal Protective Equipment

As a minimum, clear eye protection meeting ANSI-Z 87, hard hats meeting ANZI-Z-89, and high visibility vests or shirts meeting class II reflective criteria, shall be worn at all times on the project outside of an office setting or an enclosed cab. Gloves shall be worn 100% of the time; at minimum gloves shall be a cut level 3, unless a task specifically requires a higher cut level.

Housekeeping

All subcontractors will practice good housekeeping such that related hazards are eliminated. Trash and debris are to be removed to dumpsters each shift. Cords and hoses are to be elevated, bridged, buried, or controlled to eliminate trip hazard and damage from equipment travel. Work areas will be kept organized and free of clutter. Walkways and stairs will be kept clean and free of construction materials.



Fall Protection

All subcontractors will follow safe working from heights procedures, and when working on a ladder will ensure ladders are inspected before use. When exposed to a potential fall of 6 foot or greater and not otherwise on approved for use ladder, fall protection must be used. When engineering controls do not fully mitigate a fall hazard, 100% tie-off is required using a full-body harness fully compliant with OSHA 1926 subpart M. Shock absorbing lanyards are prohibited, while self-retracting deceleration devices (yoyos) are required.

Equipment Operation

Equipment operators must be able to show proof of training onsite and/or required training license as may be applicable. All equipment is to be operated and maintained as per manufacturer recommendations, and with current registration, licenses, and inspection for use clearance



 Signature of CEO or Principal-in-Charge

 Print Name and Title

 Company

 Date